

## what we do:

The ultimate goal of the Eye Tumor Research Foundation is to improve patient care by improving methods of diagnosis and treatment of the affected patient. The contributions made to the foundation are specifically for one purpose—to provide support for research in the investigation of eye cancers and eye tumors.

**Your contributions to the Eye Tumor Research Foundation has supported numerous avenues of ocular oncology including:**

- Combined intravitreal melphalan and topotecan for recurrent vitreous seeding from retinoblastoma
- EDI OCT of choroidal metastasis
- Iris stromal cyst management with absolute alcohol-induced sclerosis
- Intra-arterial chemotherapy for retinoblastoma
- Plaque radiotherapy of scleral-invasive conjunctival squamous cell carcinoma
- Choroidal melanocytosis evaluation with edi oct
- Histopathologic, immunohistochemical, and genetic studies of reactive retinal astrocytic tumors
- Interferon for ocular surface squamous neoplasia
- Cytogenetic testing of iris melanoma using fine-needle aspiration biopsy
- Prognosis of uveal melanoma using genetic testing of fine-needle aspiration biopsy
- Outcomes of plaque radiotherapy for small choroidal melanoma in the macular region
- Multifistissue ocular melanocytosis and the risk of development of uveal melanoma

## you can help!

There are many ways to contribute to support the scientific research of the Eye Tumor Research Foundation. All methods of contribution are important and appreciated. Your generosity will benefit eye cancer patients as the foundation is selectively devoted to investigating cancers and tumors affecting the ocular region and, in addition, your support will benefit the generations of patients and families who may be afflicted with cancer of the eye in the future.

### Contributions can be made by:

- Gifts of cash
- Gifts through: Your estate, your will, your life insurance policy
- Gifts through your company
- A foundation: Your foundation, the United Way, or other similar organizations

The Internal Revenue Service under section 501C3 has approved tax exemption status for donations to the Eye Tumor Research Foundation. For those who prefer to give through the United Way of Southeastern Pennsylvania (ID#4501), please specify that the donation be directed to: The Eye Tumor Research Foundation. Information regarding United Way donations can be obtain from the personnel department within your company.

There are many different ways of making a donation to the Eye Tumor Research Foundation:

- **Make an online donation**  
find the secure link at: [www.etrf.org/donate](http://www.etrf.org/donate)
- **Shop ETRF products**  
[www.cafepress.com/fighteyecancer](http://www.cafepress.com/fighteyecancer)
- **Fill out the attached donation card**  
Eye Tumor Research Foundation  
P.O. Box 832, Philadelphia, PA 19105

# SAVE SOMEONE'S LIFE!

Become a Superhero today!



Photos By: Lindsey Barnett

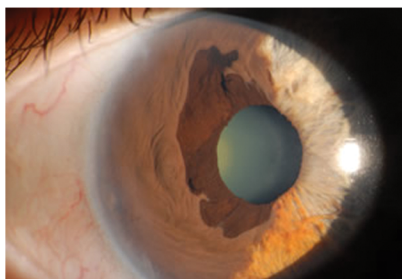


### who we are:

The Eye Tumor Research Foundation was conceived with the assistance of grateful patients and friends for the support of research in the field of eye cancer. The Foundation was formed as a nonprofit corporation under the laws of the Commonwealth of Pennsylvania in 1989. Several preliminary contributions from a few generous patients helped establish the foundation. Since the initial funding, donations have been received from around the world, even from distant places like Australia and China. Matching donations from participating employers, foundations, and charities have also been received. The contributions are specifically for one purpose - to provide support for reseach in the investigation of cancers and tumors of the eye.

### what is eye cancer?

There are many types of cancer that can appear in all parts of the eye. Many are serious life-threatening conditions. Tumors can appear on the iris, cornea, conjunctiva, eyelid, orbit, and also inside the eye in structures such as the retina,



ciliary body, choroid, and optic disc. There are various types of cancer that can disrupt these structures such as melanoma,

squamous cell carcinoma, basal cell carcinoma, lymphoma, nevus, hemangioma, retinoblastoma, astrocytoma, metastasis, etc.

To learn more about eye cancer you can visit: [www.fighteyecancer.com](http://www.fighteyecancer.com)

### stories that inspire:

Your gifts to the Eye Tumor Research Foundation



help fight for life and sight. No matter if you are battling cancer yourself or have made a donation to the Eye Tumor Research Foundation, you are a hero, an Eye Cancer Hero. We welcome all of you: Families,

doctors, patients, and friends to share with us your fight against eye cancer.

Read the testimonies of Eye Cancer Heroes here: [www.eyecancerheroes.com](http://www.eyecancerheroes.com)

Share your own story: [stories@eyecancerheroes.com](mailto:stories@eyecancerheroes.com)

### find us online!



Find us on Facebook!



Follow us on Twitter: @eye\_tumor

#eyefoughtcancer

[www.etrfo.org](http://www.etrfo.org)

Name: \_\_\_\_\_

Address: \_\_\_\_\_

City: \_\_\_\_\_

State: \_\_\_\_\_ Zip Code: \_\_\_\_\_

Phone: \_\_\_\_\_

E-mail: \_\_\_\_\_

In honor of: \_\_\_\_\_

Donated by: \_\_\_\_\_

Please send notification of my contribution to:

Name: \_\_\_\_\_

Address: \_\_\_\_\_

City: \_\_\_\_\_

State: \_\_\_\_\_ Zip Code: \_\_\_\_\_

I would like to make a tax-deductible gift in the amount of:

- \$10,000     \$500     \$50
- \$5,000     \$200     \$25
- \$1,000     \$100     Other: \_\_\_\_\_

Payment Type:

Check

Checks Payable to:  
EYE TUMOR RESEARCH FOUNDATION  
P.O. Box 832, Philadelphia, PA 19105

Credit Card – please donate on the [www.etrfo.org](http://www.etrfo.org) website

**OUR FIGHT IS FOR YOUR LIFE AND SIGHT!**

All gifts to the Eye Tumor Research Foundation are tax deductible as allowed by law.